

User's Guide

LSM1850 LSM2150

Make sure to read the **Important Precautions** before using the product.
Keep the User's Guide(CD) in an accessible place for future reference.

See the label attached on the product and give the information to your dealer when you ask for service.



Important Precautions

This unit has been engineered and manufactured to ensure your personal safety, however improper use may result in potential electrical shock or fire hazards. In order to allow the proper operation of all safeguards incorporated in this display, observe the following basic rules for its installation, use, and servicing.

On Safety

Use only the power cord supplied with the unit. In case you use another power cord, make sure that it is certified by the applicable national standards if not being provided by the supplier. If the power cable is faulty in any way, please contact the manufacturer or the nearest authorized repair service provider for a replacement.

The power supply cord is used as the main disconnection device. Ensure that the socket-outlet is easily accessible after installation.

Operate the display only from a power source indicated in the specifications of this manual or listed on the display. If you are not sure what type of power supply you have in your home, consult with your dealer.

Overloaded AC outlets and extension cords are dangerous. So are frayed power cords and broken plugs. They may result in a shock or fire hazard. Call your service technician for replacement.

As long as this unit is connected to the AC wall outlet, it is not disconnected from the AC power source even if the unit is turned off.

Do not Open the Display:

- There are no user serviceable components inside.
- There are Dangerous High Voltages inside, even when the power is OFF.
- Contact your dealer if the display is not operating properly.

To Avoid Personal Injury :

- Do not place the display on a sloping shelf unless properly secured.
- Use only a stand recommended by the manufacturer.
- Do not drop an object on or apply impact to the product. Do not throw any toys or objects on the product screen.
It can cause injury to human, problem to product and damage the display.

To Prevent Fire or Hazards:

- Always turn the display OFF if you leave the room for more than a short period of time. Never leave the display ON when leaving the house.
- Keep children from dropping or pushing objects into the display's cabinet openings. Some internal parts carry hazardous voltages.
- Do not add accessories that have not been designed for this display.
- When the display is to be left unattended for an extended period of time, unplug it from the wall outlet.
- In the presence of thunder and lightning, never touch the power cord and signal cable because it can be very dangerous. It can cause electric shock.

Important Precautions

On Installation

Do not allow anything to rest upon or roll over the power cord, and do not place the display where the power cord is subject to damage.

Do not use this display near water such as near a bathtub, washbowl, kitchen sink, laundry tub, in a wet basement, or near a swimming pool.

Displays are provided with ventilation openings in the cabinet to allow the release of heat generated during operation. If these openings are blocked, built-up heat can cause failures which may result in a fire hazard. Therefore, NEVER:

- Block the bottom ventilation slots by placing the display on a bed, sofa, rug, etc.
- Place the display in a built-in enclosure unless proper ventilation is provided.
- Cover the openings with cloth or other material.
- Place the display near or over a radiator or heat source.

Do not rub or strike the Active Matrix LCD with anything hard as this may scratch, mar, or damage the Active Matrix LCD permanently.

Do not press the LCD screen with your finger for a long time as this may cause some afterimages.

Some dot defects may appear as Red, Green or Blue spots on the screen. However, this will have no impact or effect on the display performance.

If possible, use the recommended resolution to obtain the best image quality for your LCD display. If used under any mode except the recommended resolution, some scaled or processed images may appear on the screen. However, this is characteristic of the fixed-resolution LCD panel.

Leaving a fixed image on the screen for a long time may cause damage to the screen and cause image burn-in. Make sure to use a screen saver on the product. Burn-in and related problems are not covered by the warranty on this product.

Do not shock or scratch the front and sides of the screen with metallic objects. Otherwise, it may cause damage to the screen.

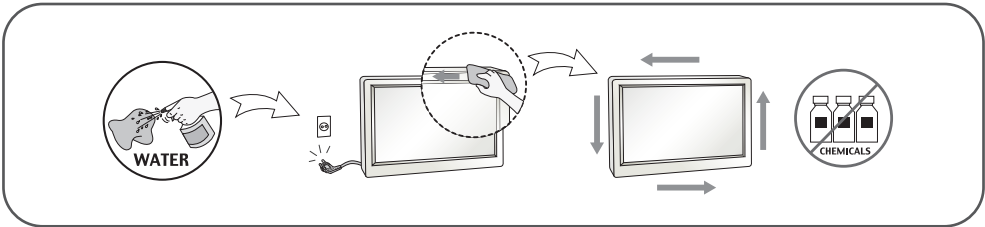
Make sure the panel faces forward and hold it with both hands to move. If you drop the product, the damaged product can cause electric shock or fire. Contact an authorized the service center for repair.

Avoid high temperatures and humidity.

Important Precautions

On Cleaning

- Unplug the display before cleaning the face of the display screen.
- Use a slightly damp (not wet) cloth. Do not use an aerosol directly on the display screen because over-spraying may cause electrical shock.
- When cleaning the product, unplug the power cord and scrub gently with a soft cloth to prevent scratching. Do not clean with a wet cloth or spray water or other liquids directly onto the product. An electric shock may occur. (Do not use chemicals such as benzene, paint thinners or alcohol)
- Spray water onto a soft cloth 2 to 4 times, and use it to clean the front frame; wipe in one direction only. Too much moisture may cause staining.



On Repacking

- Do not throw away the carton and packing materials. They make an ideal container in which to transport the unit. When shipping the unit to another location, repack it in its original material.

On Disposal (Only , Hg lamp used LCD Monitor)

- The fluorescent lamp used in this product contains a small amount of mercury.
- Do not dispose of this product with general household waste.
- Disposal of this product must be carried out in accordance to the regulations of your local authority.

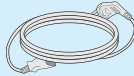
Accessories

!!! Thank for selecting LGE products !!!

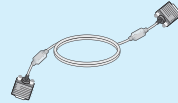
- Please make sure the following items are included with your monitor. If any items are missing, contact your dealer.



User's Guide/Cards



Power Cord



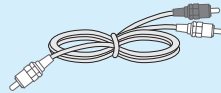
15-pin D-Sub Signal Cable
(To set it up, this signal cable may be attached to this product before shipping out.)



Remote Control/Batteries



Audio Cable (PC)



RCA Stereo cable

NOTE

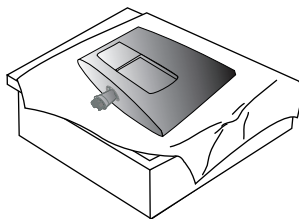
- This accessories may look different from those shown here.
- User must use shielded signal interface cables (D-sub 15 pin cable) with ferrite cores to maintain standard compliance for the product.

Before Connecting to the PC

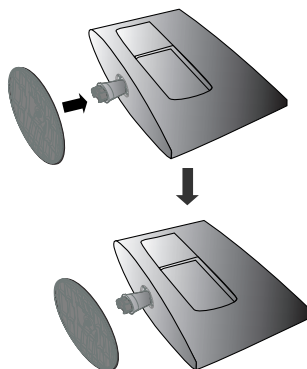
Stand Installation

- Before setting up the product, ensure that the power supply, the computer system, and other attached devices is turned off.

1 Carefully place the product screen side down on a cushioned surface that will protect product and screen from damage.

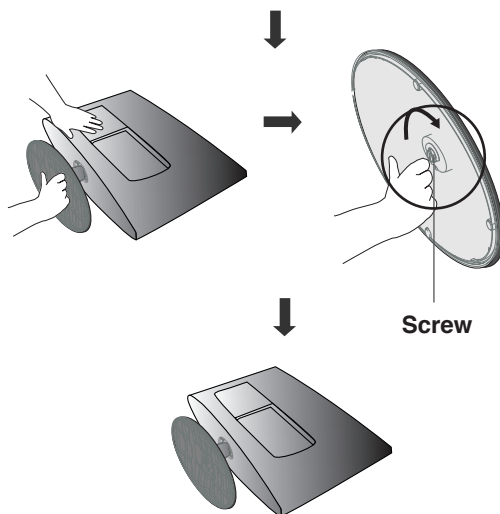


2 Insert the **stand base** into the product



3 Attach the monitor to the Stand Base by turning the screw to the right.

* Turn the screw by using the screw handle

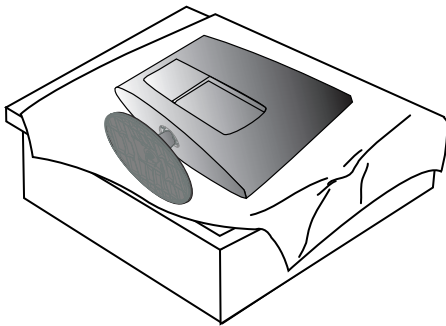


Before Connecting to the PC

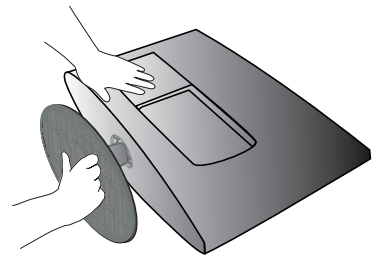
Detaching Stand

- Before setting up the product, ensure that the power supply, the computer system, and other attached devices is turned off.

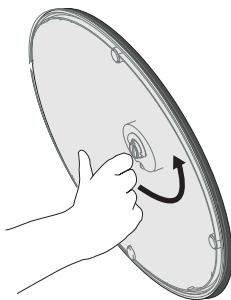
1 Place the set screen side down on a cushion or soft cloth.



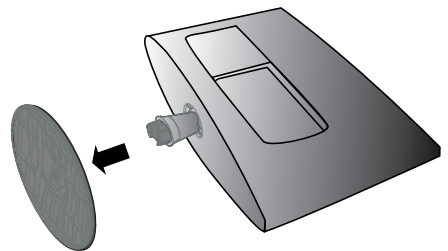
2 Detach the monitor to the Stand Base by turning the screw to the left.



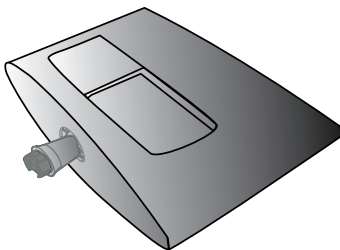
3 Turn the screw by using the screw handle



4 Pull the stand base.



5

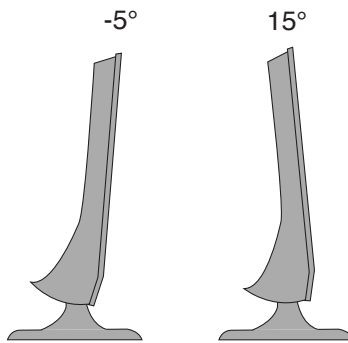


Before Connecting to the PC

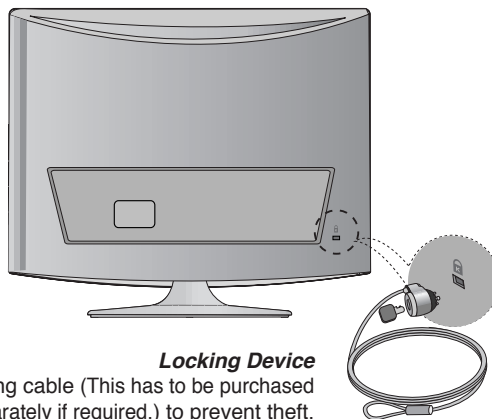
- Before setting up the product, ensure that the power supply, the computer system, and other attached devices is turned off.

Positioning your display

1. Adjust the position of the panel in various ways for maximum comfort.
 - Tilt Range



Theft prevention locking device



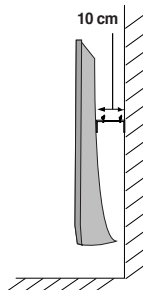
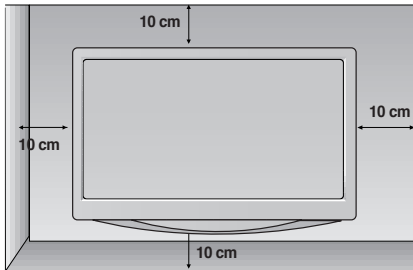
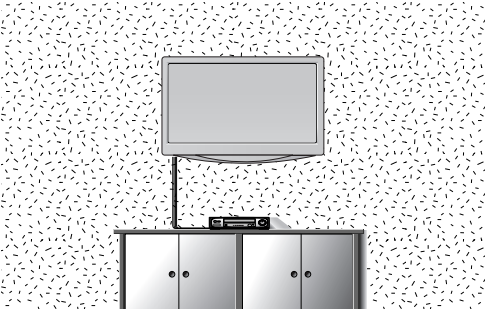
Locking Device

Use this locking cable (This has to be purchased separately if required.) to prevent theft.

Before Connecting to the PC

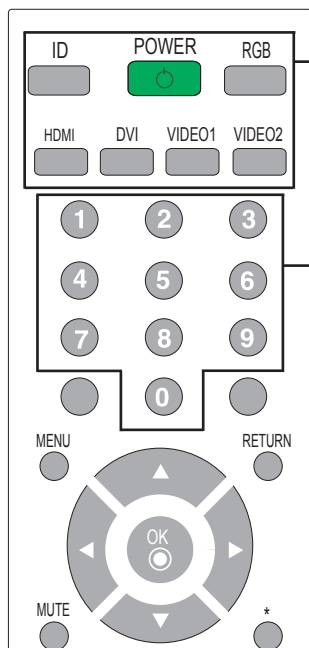
WALL MOUNT: HORIZONTAL INSTALLATION

For proper ventilation, allow a clearance of 10 cm on each side and from the wall. Detailed installation instructions are available from your dealer, see the optional Tilt Wall Mounting Bracket Installation and Setup Guide.



Name and Function of the Parts

● Name of the Remote Control Buttons



ID
Input ID.

POWER
Turn the monitor on or off.

RGB PC,HDMI,DVI,VIDEO1,VIDEO2
Select input sources.

Number buttons
Used for input ID.

MENU
Use this button to enter the On Screen Display menu.

MUTE
Switches the sound on or off.

RETURN
Return one step.

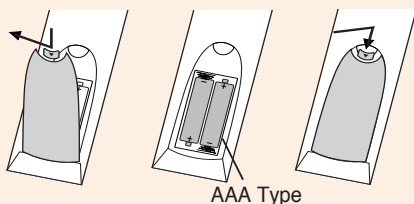
▼▲◀▶ Button
Able to change channel.

OK Button
Use when functional adjustment is completed. Double press the OK button, then Auto Config. (Only RGB PC input)

*
There is not a function which is supported.

■ **NOTE** : In case of weak stereo sound signals, with stereo or Nicam stereo transmission, select mono reception.

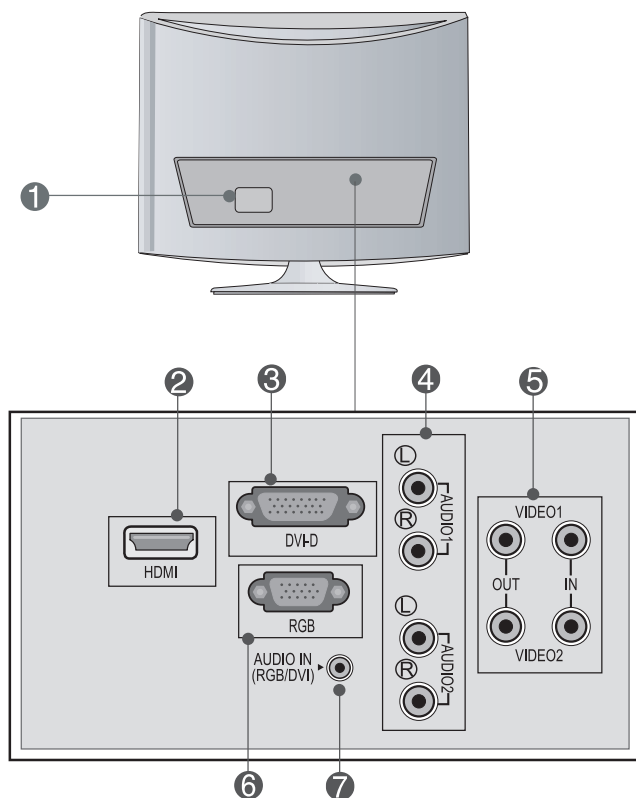
● Inserting batteries into remote control.



1. Take out the battery cap.
2. Insert the batteries with correct polarity (+/-).
3. Close the battery cap.
 - Dispose of used batteries in the recycle bin to prevent environmental pollution.

Name and Function of the Parts

● Rear View



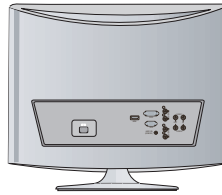
- ① Power Connector : Connect the power cord.
- ② HDMI Digital Signal Connector
- ③ DVI Digital Signal Connector
- ④ AV Sound Jack(AUDIO Input)
- ⑤ AV Input / Output terminal
- ⑥ RGB Analog Signal Connector
- ⑦ RGB, DVI Sound Jack : Connect to the jack in the PC sound card.

Connecting to External Devices

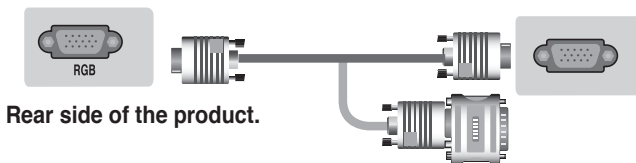
■ ■ ■ Connecting to your PC

1. First of all, see if the computer, product and the peripherals are turned off. Then, connect the signal input cable.

Rear side of the product.



- A Connecting with the D-Sub signal input cable.



Rear side of the product.

Macintosh Adapter (Not included)
Use the standard Macintosh adapter since an incompatible adapter is available in the market. (Different signaling system)

- B Connecting with the DVI signal input cable.



Rear side of the product.

2. Connect the audio cable.

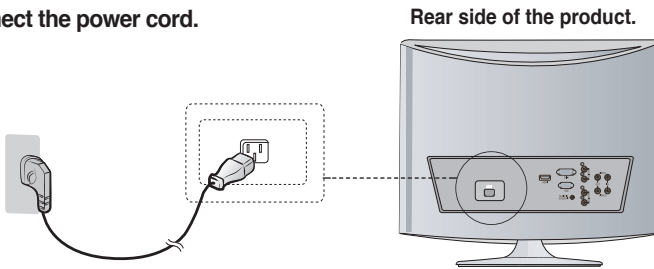


Rear side of the product.

- Make sure to check the sound card connection terminal in the PC before connecting to the product. If the PC sound card supports both Speaker Out and Line Out, change it to Line Out by setting the jumper or the PC application. (For more details, refer to the sound card user's guide.)
 - **Speaker Out** : The terminal connected to the speaker that is not equipped with an amplifier.
 - ***Line Out** : The terminal connected to the speaker equipped with an amplifier.If Audio In in the PC sound card has only Speaker Out, reduce the PC volume. This product is integrated with an amplifier.

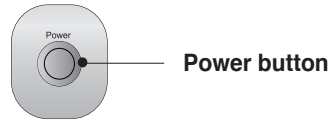
Connecting to External Devices

3. Connect the power cord.



4. ① Turn on power by pressing the power button on the product.

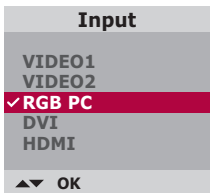
② Turn on the PC.



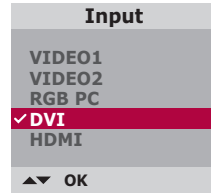
5. Select an input signal.

Press the input source button on the remote control to select the input signal.
Or, press the INPUT button at the bottom of the product.

A • Select RGB PC



B • Select DVI



Each time you press the Input button it will change to VIDEO1 → VIDEO2 → RGB PC → DVI → HDMI.

If nothing is inputted for several seconds the screen will automatically move to the selected menu.



Note

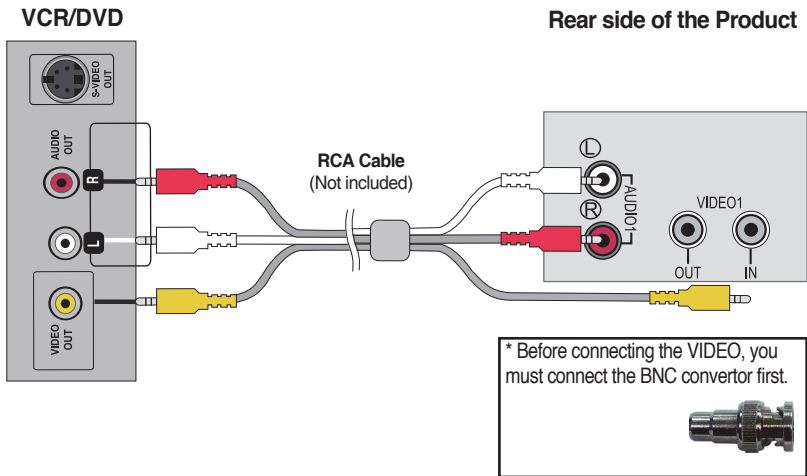
• Directly connect to a grounded power outlet on the wall or a power bar with a ground wire.

Connecting to External Devices

■ ■ ■ Connecting to VCR/DVD

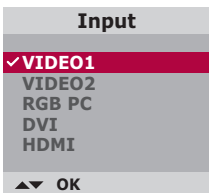
1. Connect the video/audio cable as shown in the figure below and then connect the power cord.

- Connect the input terminal with a proper colour match.



2. Select an input signal.
Press the input source button on the remote control to select the input signal.
Or, press the INPUT button at the bottom of the product.

- (A)** When connecting with VIDEO1.
• Select VIDEO1



- (B)** When connecting with VIDEO2.
• Select VIDEO2



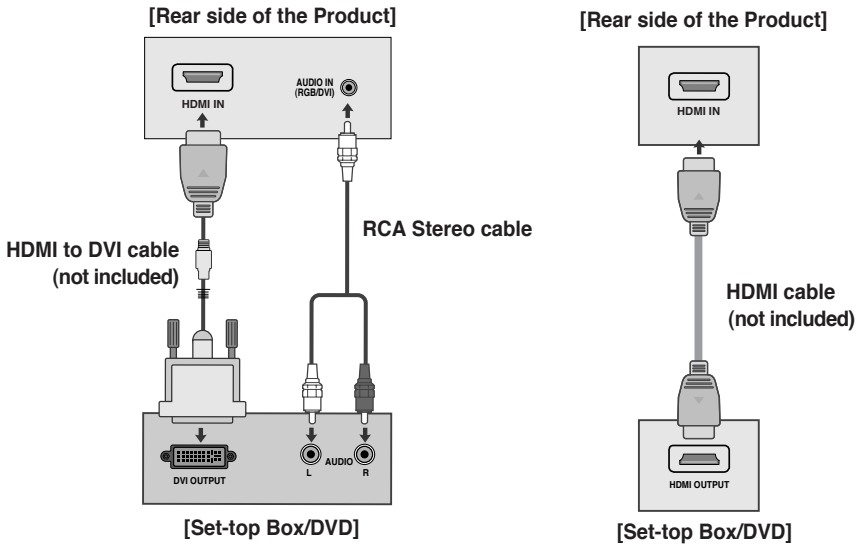
Each time you press the Input button it will change to VIDEO1 → VIDEO2 → RGB PC → DVI → HDMI.

If nothing is inputted for several seconds the screen will automatically move to the selected menu.

Connecting to External Devices

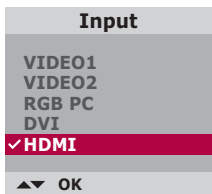
■ ■ ■ When watching HDMI from the DVD/Set-top Box

1. Connect the HDMI cable as shown in the below figure and then connect the power cord.



2. Select an input signal.
Press the input source button on the remote control to select the input signal.
Or, press the INPUT button at the bottom of the product.

- Select HDMI



Each time you press the Input button it will change to VIDEO1 → VIDEO2 → RGB PC
→ DVI → HDMI.
If nothing is inputted for several seconds the screen will automatically move to the selected menu.

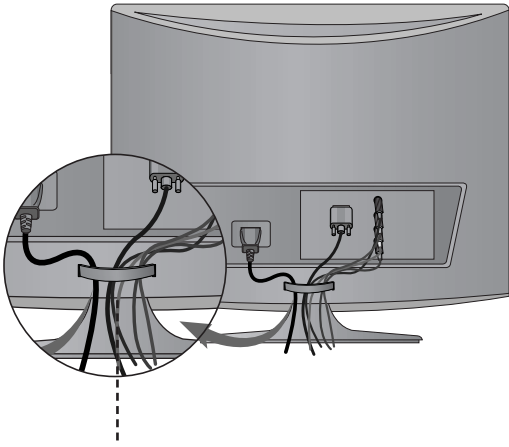


Note

- HDMI Input does not support PC mode. If it is connected PC, the screen may not be displayed properly.

To arrange cables using cable management

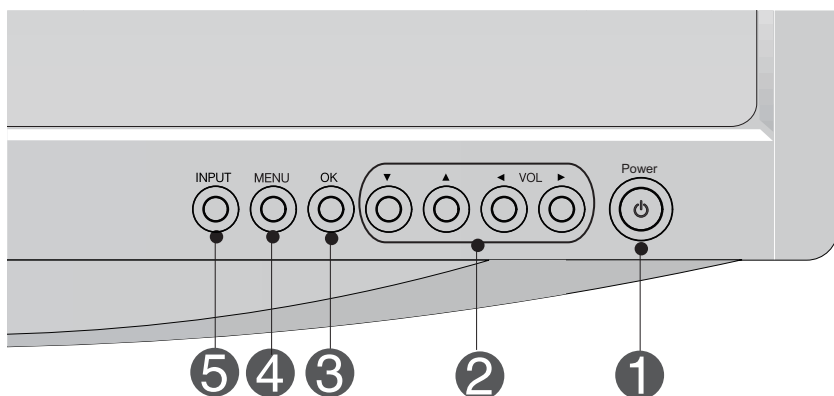
1. Tie cables together with a cable management as shown in the illustration.



Cable management

Adjusting the Screen

● Name of the Buttons in the Screen Adjustment Unit



1 **Power Button** • Use this button to turn the product on and off.

2 **OSD Select/Adjust Button** • Use this button to select an icon or adjust the setting in the OSD screen.

▼▲ • Adjust the up and down.

◀▶ • Adjust the volume.



3 **OK Button** • OK button is usually used in choosing the MENU. When there is no MENU on the screen pushing the OK button will give the information about the current input source.

4 **MENU Button** • Use this button to show/hide the OSD (On Screen Display) menu screen.

Adjusting the Screen

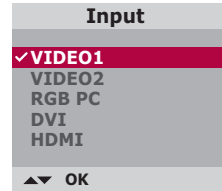
● Name of the Buttons in the Screen Adjustment Unit

5

INPUT Button

VIDEO1
VIDEO2
RGB PC
DVI
HDMI

CVBS
CVBS
D-Sub analog signal
DVI Digitalsignal
HDMI Digital signal







Each time you press the Input button it will change to VIDEO1 → VIDEO2 → RGB PC → DVI → HDMI.

If nothing is inputted for several seconds the screen will automatically move to the selected menu.

Adjusting the Screen

OSD Menu

Icon	Function Description
 Picture	Adjusts screen brightness, contrast and colour that you prefer.
 Audio	Adjusts the audio options.
 Time	Adjusts the timer options.
 Option	Adjusts the screen status according to the circumstances.

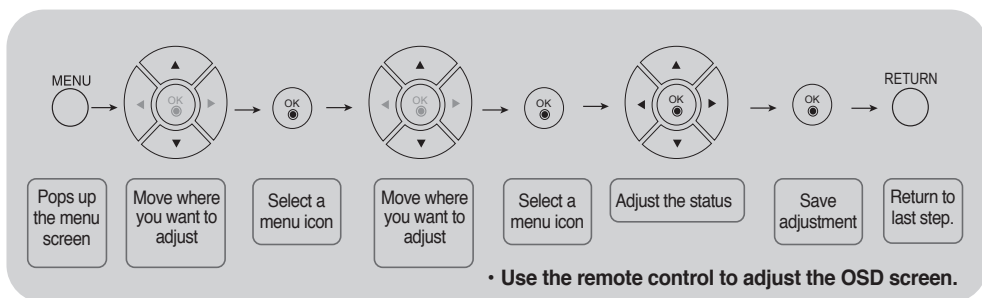


Note OSD(On Screen Display)

The OSD function enables you to adjust the screen status conveniently since it provides graphical presentation.

Adjusting the Screen

● How to adjust the OSD (On Screen Display) screen



1 Press the **MENU** Button, then the main menu of the OSD will appear.

2 To access a control, use the ▼▲ Buttons.

3 When the icon you want becomes highlighted, press the **OK** Button.

4 Use the ▼▲◀▶ Buttons to adjust the item to the desired level.

5 Accept the changes by pressing the **OK** Button.

6 Exit the OSD by pressing the **RETURN** Button.

● How to adjust the screen automatically

Press the OK button twice in the PC analog signal. Then optimal screen settings will be selected that fit into the current mode. If adjustment is not satisfactory, you can adjust the screen manually.

[For PC Analog signal]

Auto in progress
For optimal display change
resolution to 1360 X 768

LSM1850

Auto in progress
For optimal display change
resolution to 1920 X 1080

LSM2150

Adjusting the Screen

On-Screen Menu Language Selection

Language menu appears on product screen when it is turned on for the first time.



Press the ▼▲◀▶ button and then, **OK** button to select your desired language.

* If you want to change Language selection

1. Press the **MENU** button and then ▼▲ button to select the **Option** menu.
2. Press the ▶ button and then ▼▲ button to select Language.
The menus can be shown on the screen in the selected language.
3. Press the ▶ button and then ▼▲◀▶ button to select your desired language.
4. Press the **OK** button.

Note

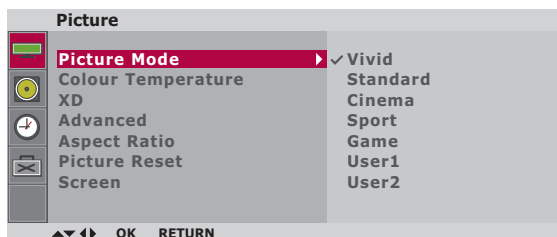
- If you don't finish set up Language menu by pressing **MENU** button or time out of OSD (On Screen Display) display, it will continuously appear until completing set up whenever the set is turned on.

Adjusting the Screen



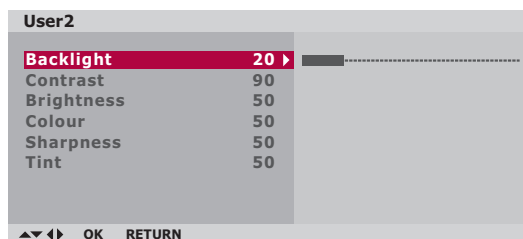
Adjusting Screen Colour

Picture Mode



Toggles between screen presets.

- **Vivid**
Select this option to display with a sharp image.
- **Standard**
The most general and natural screen display status.
- **Cinema**
Select this option to lower brightness by one level.
- **Sport**
Select this option to display with a soft image.
- **Game**
Select this option to enjoy dynamic image when playing a game.
- **User1,2**
Select this option to use the user-defined settings.



Backlight: To control the brightness of the screen, adjust the brightness of LCD panel.

Contrast: Adjust the difference between the light and dark levels in the picture.

Brightness: To adjust the brightness of the screen.

Colour: To adjust the colour to desired level.

Sharpness: To adjust the clearness of the screen.

Tint: To adjust the tint to desired level.

* **Colour, Sharpness, Tint** function are available only in **VIDEO/HDMI**.



Note

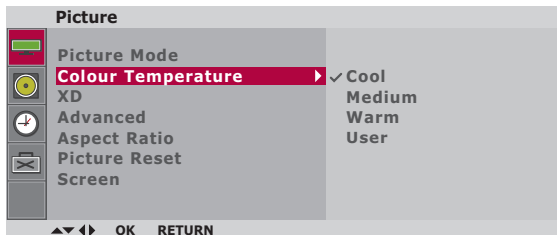
If the 'Picture Mode' setting in the **Picture** menu is set to **Vivid, Standard, Cinema, Sport** or **Game** the subsequent menus will be automatically set.

Adjusting the Screen



Adjusting Screen Colour

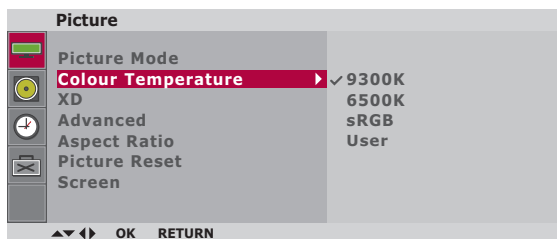
Colour Temperature



[VIDEO/HDMI]
PICTURE MODE:User1/User2

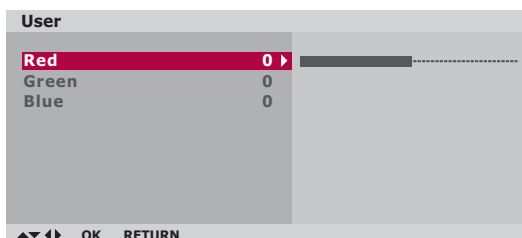
Colour Settings

- **Cool:** Slightly purplish white.
- **Medium:** Slightly bluish white.
- **Warm:** Slightly lower brightness.
- **User:** Select this option to use the user-defined settings.



[RGB PC/DVI]
PICTURE MODE:User1/User2

- **9300K**
Slightly bluish white.
- **6500K**
Slightly reddish white.
- **sRGB**
Set the screen color to fit the sRGB standard color specification.
- **User**
Select this option to use the user-defined settings.



Red / Green / Blue

Set your own colour levels.

Adjusting the Screen



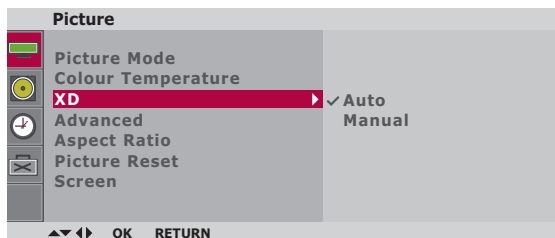
Adjusting Screen Colour

XD

XD is LG Electronics unique picture improving technology to display a real **HD** source through an advanced digital signal processing algorithm.

It's not available to use this function in **RGB PC** or **DVI** modes.

This menu is activated after selecting **User1** or **User2** of **Picture Mode**.



- **Auto** : **XD** is automatically changed to **Auto**.
- **Manual** : When selecting the Manual, you can adjust the **XD Contrast**, **XD Colour**, **XD NR**.

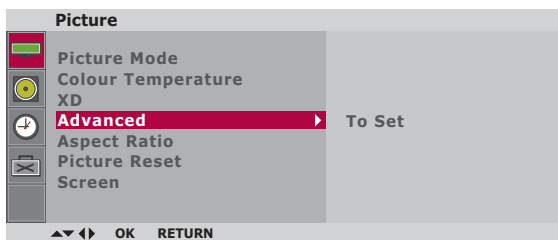
- **XD Contrast**: Optimizing the contrast automatically according to the brightness of the reflection.
- **XD Colour**: Adjusting the colours of the reflection automatically to reproduce as closely as possible to natural colours.
- **XD NR**: Removing the noise up to the point where it does not damage the original picture.

Adjusting the Screen



Adjusting Screen Colour

Advanced This function is available only in VIDEO/HDMI modes.



- **Gamma:** Set your own gamma level : **Low,Medium,High.**
On the monitor, high gamma values display whitish images and low gamma values display blackish images.
- **Film Mode:** When you watch a movie, this function adjusts the set to the best picture appearance. (Only for VIDEO mode)
- **Black Level:** adjusts the contrast and the brightness of the screen using the black level of the screen.

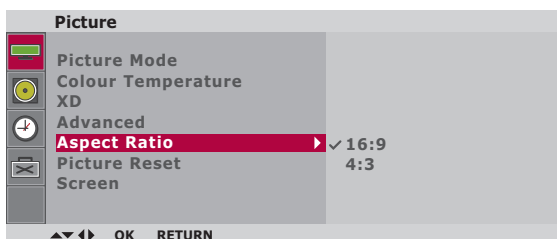
- **Low :** The reflection of the screen gets brighter.
- **High :** The reflection of the screen gets darker.

Adjusting the Screen



Adjusting Screen Colour

Aspect Ratio To select the image size of the screen.



16:9 Widescreen mode.

Original The aspect ratio is not adjusted from the original. It is set by the program being watched.

4:3 This picture format is 4:3 aspect ratio.

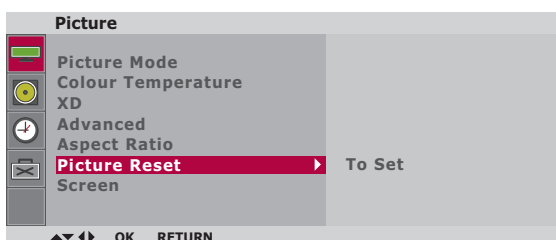
14:9 14:9 programs are viewed normally in 14:9 with black bars added to the top and bottom. 4:3 programs are magnified on the top/bottom and left/right sides.

Zoom1, 2 4:3 programmes are magnified until they fill the 16:9 screen. The top and bottom will be cut off.

Just Scan Following Selection will lead to you view the picture of best quality without loss of original picture in high resolution image.
(Only for HDMI (720P↑) input and VIDEO input)

ARC \ MODE	VIDEO	HDMI	DVI	RGB PC
16:9	●	●	●	●
Original	●	×	×	×
4:3	●	●	●	●
14:9	●	×	×	×
Zoom1	●	×	×	×
Zoom2	●	×	×	×
Just Scan	●	● (720P↑)	×	×

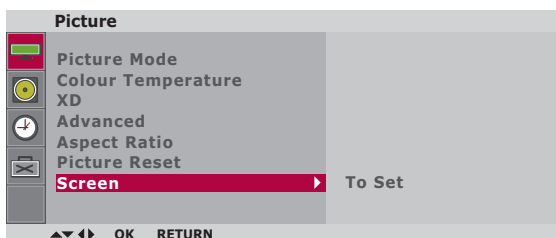
Picture Reset Return **Picture Mode**, **Colour Temperature**, **Advanced** to the default factory settings.



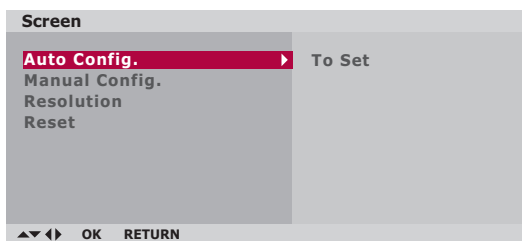
Adjusting the Screen



Adjusting Screen Colour



Auto config. This button is for the automatic adjustment of the screen **Position**, **Clock** and **Phase**. (Only for RGB.)



Manual Config. This button is for the manual adjustment of the screen **Position**, **Clock** and **Phase**.

- **Phase (Only for RGB.)**
To adjust the focus of the display. This item allows you to remove any horizontal noise and clear or sharpen the image of characters.
- **Clock (Only for RGB.)**
To minimize any vertical bars or stripes visible on the screen background.
- **H-Position (It is not working in DVI/AV mode.)**
To move the displayed image left or right.
- **V-Position (It is not working in DVI/AV mode.)**
To move the displayed image up or down.

Resolution To view the best resolution of RGB PC mode. Select the same resolution on OSD with PC's. It's working at RGB PC mode when vertical frequency is 60Hz. It's working at RGB PC mode and only Input resolution is ****x768(LSM1850)/****X1050(LSM2150), then adjust the screen automatically by pressing 'OK' button twice .

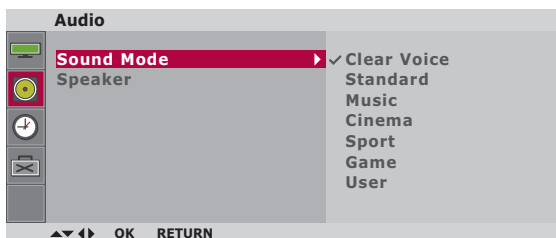
Reset Use this function to reset the Screen. (Only for RGB/HDMI.)

Adjusting the Screen

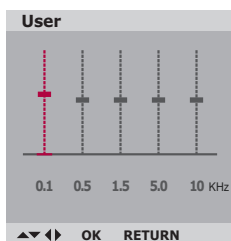


Adjusting the audio function

Sound Mode The best sound tone quality will be selected automatically depending on the video type that you're currently watching.

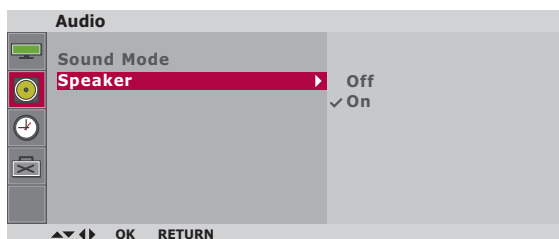


- **Clear Voice:** By differentiating the human sound range from others, it helps users listen to human voices better.
- **Standard:** The most commanding and natural audio.
- **Music:** Select this option to enjoy the original sound when listening to the music.
- **Cinema:** Select this option to enjoy sublime sound.
- **Sport:** Select this option to watch sports broadcasting.
- **Game:** To enjoy dynamic sound when playing a game.
- **User:** Select this option to use the user-defined audio settings.



Speaker

You can adjust internal speaker status. If you want to use your external hi-fi stereo system, turn off the internal speakers of the set.



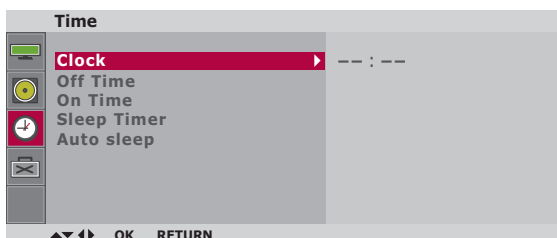
Note

When connected to your computer and the 'Sound Mode' setting in the audio menu is **Clear Voice**, **Standard**, **Music**, **Cinema** or **Sport**, the available menu is **Speaker**.

Adjusting the Screen



Adjusting the time function



Clock

This function is used to set up of current time.

You must set the time correctly before using **On/Off time** function.

- 1) Press the **MENU** button and then use **▼▲** button to select the **TIME** menu.
- 2) Press the **▶** button and then use **▼▲** button to select the **Clock** menu.
- 3) Press **▶** button and then use **▼▲** button to set the hour(00~23).
- 4) Press **▶** button and then use **▼▲** button to set the minutes(00~59).

The default value is -- : --.

- 5) Press the **OK/MENU** button to save.

Off/On time

The **Off time** automatically switches the set to off mode at the pre-set time.

- 1) Press the **MENU** button and then use **▼▲** button to select the **TIME** menu.
- 2) Press the **▶** button and then use **▼▲** button to select **Off time** or **On time**.
- 3) Press the **▶** button and then use **▼▲** button to set the hour(00~23).
- 4) Press the **▶** button and then use **▼▲** button to set the minutes(00~59).
- 5) Press the **▶** button and then use **▼▲** button to select **On** or **Off**.
- 6) Only **On time** function; Press the **▶** button and then **▼▲** button to adjust volume level and programme number.
- 7) Press the **OK/MENU** button to save.

Sleep Timer

The power is automatically turned off when the time set by a user is passed.

- 1) Press the **MENU** button and then use button to select the Sleep Timer menu.
- 2) Press the button and then use button to select the minutes(10,20,30,60,90,120,180,240) or off.
- 3) Press the **OK/MENU** button to save.

Auto sleep

If **Auto sleep** is active and there is no input signal, the set switches to off mode automatically after 10 minutes. (It is not working in PC)

- 1) Press the **MENU** button and then use **▼▲** button to select the **Auto sleep** menu.
- 2) Press the **▶** button and then use **▼▲** button to select **On** or **Off**.
- 3) Press the **OK/MENU** button to save .



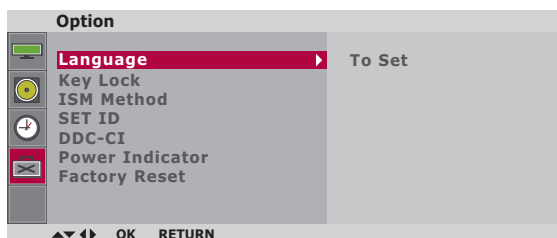
Note

- In the event of power interruption (disconnection or power failure), the **Clock** must be reset.
- Two hours after the set is switched on by the **On time** function it will automatically switch back to off mode unless a button has been pressed.
- Once the **On** or **Off time** is set, these functions operate daily at the preset time.
- **Off time** function overrides **On time** function if they are set to the same time.
- The set must be in off mode for the **On time** to work.
- **On time** will move on to auto off if no activity is received in 2hours after setting the **On time**.

Adjusting the Screen



Selecting the options



Language To choose the language in which the control names are displayed.

Key lock Use the ▼▲ buttons to select **On** or **Off**. It can be set up so that it can only be used with the remote control. This feature can prevent unauthorized viewing.

In order to lock the OSD screen adjustment, set the **Key lock** tab to the 'On' position.

In order to unlock it, do the following :

* Push the **MENU** button on the remote control and set **Key lock** to the 'Off' position.

ISM Method A frozen or still picture from a PC/Video game displayed on the screen for prolonged periods could result in a ghost image remaining even when you change the image. Avoid allowing a fixed image to remain on the screen for a long period of time.

Normal: Leave on normal if you don't foresee image burn in being a problem.

White wash: White wash fills the screen with solid white. This helps remove permanent images burned into the screen. A permanent image may be impossible to clear entirely with white wash.

Orbiter: May help prevent ghost images. However, it is best not to allow any fixed image to remain on the screen. To avoid a permanent image on the screen, the screen will move every 2 minutes.

Inversion: This function inverts the panel colour of the screen. The panel colour is automatically inverted every 30 minutes.

Set ID You can assign a unique Set ID NO (name assignment) to each product when several products are connected for display. Specify the number (1~99) using the ▼▲ button and exit. Use the assigned Set ID to individually control each product using the Product Control Program.

DDC-CI DDC/CI (Display Data Channel Command Interface) is a communication protocol for communications between PC and monitor. DDC/CI makes it possible to adjust and setup detailed functions on PC instead of the monitor OSD.

Monitor can be adjusted with PC by connecting communication between PC and monitor when DDC/CI is ON, and monitor cannot be adjusted with PC because communication between PC and monitor is disconnected when DDC/CI is OFF.

Power Indicator Use this function to set the power indicator on the front side of the product to On or Off.

Factory Reset Select this option to return to the default factory settings.

Troubleshooting

No image is displayed

- Is the product's power cord connected?
 - Is the power indicator turning on?
 - Power is on, power indicator is blue but the screen appears extremely dark.
 - Does the power indicator look amber?
 - Does the 'Out of range' message appear?
 - Does the 'Check signal cable' message appear?
- Check if the power cord is properly connected to the outlet.
 - See if the power switch is turned on.
 - Adjust brightness and contrast again.
 - If the product is in power saving mode, move the mouse or press any key.
 - In DVD Player or Settop Box, check the power status of connected device.
 - The signal from the PC (video card) is out of the vertical or horizontal frequency range of the product. Adjust the frequency range by referring to the Specifications in this user's guide.
 - * **Maximum resolution**
LSM1850: 1366 X 768 @60 Hz
LSM2150: 1920 X 1080 @60 Hz
 - The signal cable between PC and product is not connected. Check the signal cable.
 - Press the 'INPUT' button in the remote control to check the input signal.

'Unknown Product' message appears when the product is connected.

- Did you install the driver?
- Install the product driver, which is provided with the product, or download it from the web site. (<http://www.lge.com>)
 - See if the plug&play function is supported by referring to the video card user's guide.



Note

* **Vertical frequency:** To enable the user to watch the product display, screen image should be changed tens of times every second like a fluorescent lamp. The vertical frequency or refresh rate is the times of image display per second. The unit is Hz.

* **Horizontal frequency:** The horizontal interval is the time to display one vertical line. When the 1 is divided by horizontal interval, the number of horizontal lines displayed every second can be tabulated as the horizontal frequency. The unit is kHz.

Troubleshooting

The screen image looks abnormal.

● Is the screen position wrong?

• Adjust the Position menu in OSD.

• See if the video card resolution and frequency are supported by the product. If the frequency is out of range, set to the recommended resolution in the Control Panel – Display – Setting menu.

● Do thin lines appear on the background screen?

• Adjust the Clock menu in OSD.

● Horizontal noise appears or the characters look blurred.

• Adjust the Phase menu in OSD.

After-image appears on the product.

● After-image appears when the product is turned off.

• If you use a fixed image for a long time, the pixels may be damaged quickly. Use the screen saver function.

Troubleshooting

The audio function does not work.

- **No sound?**
 - Check if the audio cable is connected properly.
 - Adjust the volume.
 - Check if the sound is set properly.
- **Sound is too low.**
 - Adjust the volume.

Screen colour is abnormal.

- **Screen has poor colour resolution (16 colours).**
 - Set the colour resolution to more than 24 bits (true colour)
Select Control Panel – Display – Settings
– Colour Table menu in Windows.
- **Screen colour is unstable or mono-colour.**
 - Check the connection status of the signal cable.
Or, re-insert the PC video card.
- **Do black spots appear on the screen?**
 - Several pixels (red, green, white or black colour) may appear on the screen, which can be attributable to the unique characteristics of the LCD panel. It is not a malfunction of the LCD.

Specifications

The product specifications can change without prior notice for product improvement.

LSM1850

LCD Panel	Screen Type	47.01 cm Wide (18.51 inch) TFT (Thin Film Transistor) LCD (Liquid Crystal Display) Panel Visible diagonal size: 47.01 cm
	Pixel Pitch	0.300(H) x 0.300(V) mm
Video Signal	Max. Resolution	1366 X 768 @60 Hz
	Recommended Resolution	1360 X 768 @60 Hz
	Horizontal Frequency	30 kHz - 61 kHz
	Vertical Frequency	56 Hz - 75 Hz
	Synchronization Type	Separate Sync, Digital
Input Connector	Composite video, D-Sub Analog, DVI-D, HDMI, PC Audio In	
Power	Rated Voltage	AC 100 - 240 V~ 50 / 60 Hz 0.8 A
	Power Consumption	On Mode : 24 W (Typ.) Sleep Mode ≤ 2 W (RGB PC Input) Off Mode ≤ 1 W
Tilt	Tilt Range	-5° - 15°
Dimension/Weight	Size (WxLxH)	454.5 mm x 193.2 mm x 362.8 mm
	Weight (excl. package)	3.8 kg (8.38 lbs)
Environmental Conditions	Operational Condition	Temperature: 10 °C - 35 °C , Humidity: 20 % - 80 %
	Storage Condition	Temperature: -10 °C - 60 °C , Humidity: 5 % - 90 %

Specifications

The product specifications can change without prior notice for product improvement.

LSM2150

LCD Panel	Screen Type	54.68 cm Wide (21.53 inch) TFT (Thin Film Transistor) LCD (Liquid Crystal Display) Panel Visible diagonal size: 54.68 cm
	Pixel Pitch	0.248(H) x 0.248(V) mm
Video Signal	Max. Resolution	1920 X 1080 @60 Hz
	Recommended Resolution	1920 X 1080 @60 Hz
	Horizontal Frequency	30 kHz - 83 kHz
	Vertical Frequency	56 Hz - 75 Hz
	Synchronization Type	Separate Sync, Digital
Input Connector	Composite video, D-Sub Analog, DVI-D, HDMI, PC Audio In	
Power	Rated Voltage	AC 100 - 240 V~ 50 / 60 Hz 1.0 A
	Power Consumption	On Mode : 28 W (Typ.) Sleep Mode ≤ 2 W (RGB PC Input) Off Mode ≤ 1 W
Tilt	Tilt Range	-5° - 15°
Dimension/Weight	Size (WxLxH)	519.7 mm x 193.2 mm x 400.3 mm
	Weight (excl. package)	4.2 kg (9.33 lbs)
Environmental Conditions	Operational Condition	Temperature: 10 °C - 35 °C , Humidity: 20 % - 80 %
	Storage Condition	Temperature: -10 °C - 60 °C , Humidity: 5 % - 90 %

Specifications

Preset Modes (Resolution) - PC INPUT

■ LSM1850

Display Modes (Resolution)		Horizontal Freq. (kHz)	Vertical Freq. (Hz)
1	720 x 400	31.468	70
2	640 x 480	31.469	60
3	640 x 480	37.500	75
4	800 x 600	37.879	60
5	800 x 600	46.875	75
6	1024 x 768	48.363	60
7	1024 x 768	60.123	75
8	1280 x 768	47.776	60
*9	1360 x 768	47.712	60
10	1366 x 768	47.700	60

*Recommend Mode

■ LSM2150

Display Modes (Resolution)		Horizontal Freq. (kHz)	Vertical Freq. (Hz)
1	720 x 400	31.468	70
2	640 x 480	31.469	60
3	640 x 480	37.500	75
4	800 x 600	37.879	60
5	800 x 600	46.875	75
6	1024 x 768	48.363	60
7	1024 x 768	60.123	75
8	1280 x 1024	63.981	60
9	1280 x 1024	79.976	75
10	1680 x 1050	64.674	60
11	1680 x 1050	65.290	60
*12	1920 x 1080	66.587	60

*Recommend Mode

Specifications

Preset Modes (Resolution) - DTV INPUT

Display Modes (Resolution)	Horizontal Freq. (kHz)	Vertical Freq. (Hz)
1 720 x 480	15.75	60
2 720 x 480	15.73	60
3 720 x 576	15.625	50
4 720 x 480	31.47	60
5 720 x 480	31.50	60
6 720 x 576	31.25	50
7 1280 x 720	44.96	60
8 1280 x 720	45.00	60
9 1280 x 720	37.50	50
10 1920 x 1080	33.72	60
11 1920 x 1080	33.75	60
12 1920 x 1080	28.125	50
13 1920 x 1080	67.43	60
14 1920 x 1080	67.50	60
15 1920 x 1080	56.25	50
16 1920 x 1080	27.00	24
17 1920 x 1080	33.75	30

Power Indicator

Mode	Product
On Mode	Blue
Sleep Mode	Amber
Off Mode	Off

